



كلية تكنولوجيا المعلومات و هندسة الحاسوب

مشروع التخرج
الطالب: ليث الجعبري

بإشراف: الدكتور موسى ارفاعية

بعنوان : موقع ويب للمسارات السياحية في فلسطين

INDEX

INDEX	2
البداية	4
شكر وامتنان	4
abstract	5
Chapter 1: Introduction	6
1.1 Overview	6
1.2 Motivation	6
1.3 problem statement	6
1.4 Requirements	6
1.5 Existing work	6
1.1 Overview	6
1.2 Motivation	6
1.3 problem statement	7
1.4 Requirements	7
1.5 Existing work	7
Chapter 2: Requirements Specification	8
2.1 Introduction	8
2.2 Actors	8
2.3 Functional requirements	9
2.4 Non-functional requirements	13
Chapter 3: Software Design	15
3.1 use case diagram	15
3.2 class diagram	15
3.2 class diagram	17
الواجهات (Views):	18
خانة تبين كيفية التسجيل بالمسار من خلال مستخدم	24
chapter 4 System development and operation	25
4.1 Introduction	26

	3
4.2 Software needed for system development stage	26
4.3 system programming	27
4.4 running system	27
chapter 5 testing	28
Introduction	28
Check system	28
chapter 6 conclusion and future work	31
future work	31
system maintenance plan	31
conclusion :	31
REF:	32

البداية

بسم الله الرحمن الرحيم

شكر وامتنان

أتوجه بجزيل الشكر والامتنان إلى كل من ساعدني من قريب أو من بعيد على إنجاز هذا العمل, وأخص بالذكر الدكتور موسى ارفاعيه مشرفي الموجه وصاحب الفكرة, كما لا أنسى جميع أعضاء كلية "هندسة الحاسوب وتكنولوجيا المعلومات" من مدرسين وموظفين والذين لم يبخلوا علي يوماً في كل ما لديهم من معلومات.

الشكر موصول لأهلي الأعزاء الذين كانوا عوناً لي دائماً في كل شيء

كما لا أنسى أصدقائي, رفقاء دربي الذين من زرعوا التفاؤل في كل حين

موقع ويب للتطبيق المسارات

من منطلق ظهور المسارات داخل فلسطين وانتشارها بكثرة تم اختيار إنشاء موقع ويب لعرض هذه المسارات او الرحل الصغيره رحل السير بالأقدام هذا الموقع يعمل على السماح للمستخدمين لرؤية المسارات وعمل حجز من خلالها , أما بالنسبة للشركات التي تقوم بإنشاء هذه المسارات داخل الضفة تستطيع انشاء حساب وتسجيل مسار وتعريف كافة معلوماته وعند تحديد يوم تستطيع عرض امكانية حملها أو المتسع لدى وسائل نقلها (50 شخص مثلاً).

abstract

This site in general connects palestine's tourist routes companies with customers so that it displays tourist routes and allows customers to make a reservation through this site and allows everyone to see the tracks without registering the site

Chapter 1: Introduction

1.1 Overview

1.2 Motivation

1.3 problem statement

1.4 Requirements

1.5 Existing work

1.1 Overview

Some beautiful ideas have emerged that have emerged in the years that depend on technology and have been linked to several sectors, including medicine and trade, electronic commerce, and the use of electronic education have been used, and there is also another sector which is the tourism, travel, and migration sector. Some institutions are working on electronic invitations from exploiting websites to establish internal paths.

1.2 Motivation

Many trips are organized without using specialized web utilities for them and based on the importance of the relationship between technology and life, a program has been chosen to take care of this type of activities, and therefore the creation of a website was chosen to arrange and present these activities

1.3 problem statement

Many activities lack the process of activity, appearance, arrangement, and communication, including the paths, and therefore the need to arrange the existing paths through the website and adding maps to these activities

1.4 Requirements

In order to build this website we need:

1- Backend server: to store the data of the users in it.

2-domain: for website

3 frontend and backend technologies skills :

4-laptop or desktop for using for programming

1.5 Existing work

There is a website similar to this site. There is an Android app (طششني)

Chapter 2: Requirements Specification

2.1 Introduction

2.2 Actors

2.3 Functional requirements

2.4 Non-functional requirements

2.1 Introduction

In this chapter we will start applying some of the concepts of software engineering, Software engineering that facilitates code understanding, taking into account user customizations and requirements at all levels. Software engineering is concerned with the formation of the program from its earliest stages during the analysis of the problem, and then design, writing the program until it is tested, tested, installed on the devices, and carried out maintenance.

So that software engineering is a basic start to detail the project for programmers, here we start by mentioning users of the project, Functional requirements, Non Functional requirements and use case diagram.

2.2 Actors

1-admin(A): the admin who controls all websites.

2-guest(G): guest can see the nomads, tracks, and path

3- company(C): Add or delete trips

4- user(U): confirm the trip

2.3 Functional requirements

Note the tables explain the functional requirements for each actors

Table 1:login

Use case	Login
Primary actor	User, Company, Administrator
Goal in context	Login to the website to access additional actions
Precondition	Enter the username and password.
Trigger	Clicking on the login button
Scenario	<ol style="list-style-type: none"> 1. Access the login page. 2-Entering the credentials in the specified input fields 3-Clicking on the login button 4- The website will redirect the user to the home page, if the credentials are valid. <p>.</p>

Exceptions	Entering wrong credentials
-------------------	-----------------------------------

Table 2:register

Use case	register
Primary actor	company , user
Goal in context	Creating an account(Either user or a company account)
Precondition	No precondition.
Trigger	Clicking on the register button.
Scenario	<p>1-Access the registration page.</p> <p>2-Entering required information about the user.</p> <p>3-Clicking on the register button.</p> <p>4-If all of the required information entered are valid of the type of input fields and not empty, an account will be created and the website will be redirected to the home page.</p>

Exceptions	<p>1-Entering wrong information type such as entering a text in date of birth input fields, or wrong value such as entering</p> <p style="padding-left: 40px;">a 7-digit number in the phone number field.</p> <p>2-Leaving a required input field empty.</p>

Table 3:Request to join a trip

Use case	Request to join a trip
Primary actor	user
Goal in context	Register in a company's trip
Precondition	Being logged in.
Trigger	Clicking on the ... button

Scenario	1-Access trips page 2-clicking on a specific trip 3-clicking on register for the trip button 4- add number of person
Exceptions	No exceptions

Table 4:Create a trip

Use case	Create a trip
Primary actor	company
Goal in context	Add a new trip details to the company trips list
Precondition	Being logged in.

Trigger	Clicking on add a trip button
Scenario	1-Access the page of creating a trip 2-Entering trip details(location, cost, date and time, optional pictures) 3-Click on add a trip button. 4-then add number of the person can going with the bus
Exceptions	1-Entering wrong input fields information 2-Leaving a required input field empty.

2.4 Non-functional requirements

1-Provide Search facility: The application enables the user to enter the search text on the screen.

2- Reliability/Availability Requirements: The website has to be online 24 hours a day, 7 days a week.

3- Security: the application will have security mechanisms ensuring the whole website's security.

4-Usability: easy to use, easy to learn, easy to remember, and have a friendly graphical user interface.

5-Maintainability: The application should be developed in such a way that changes can be made easily.

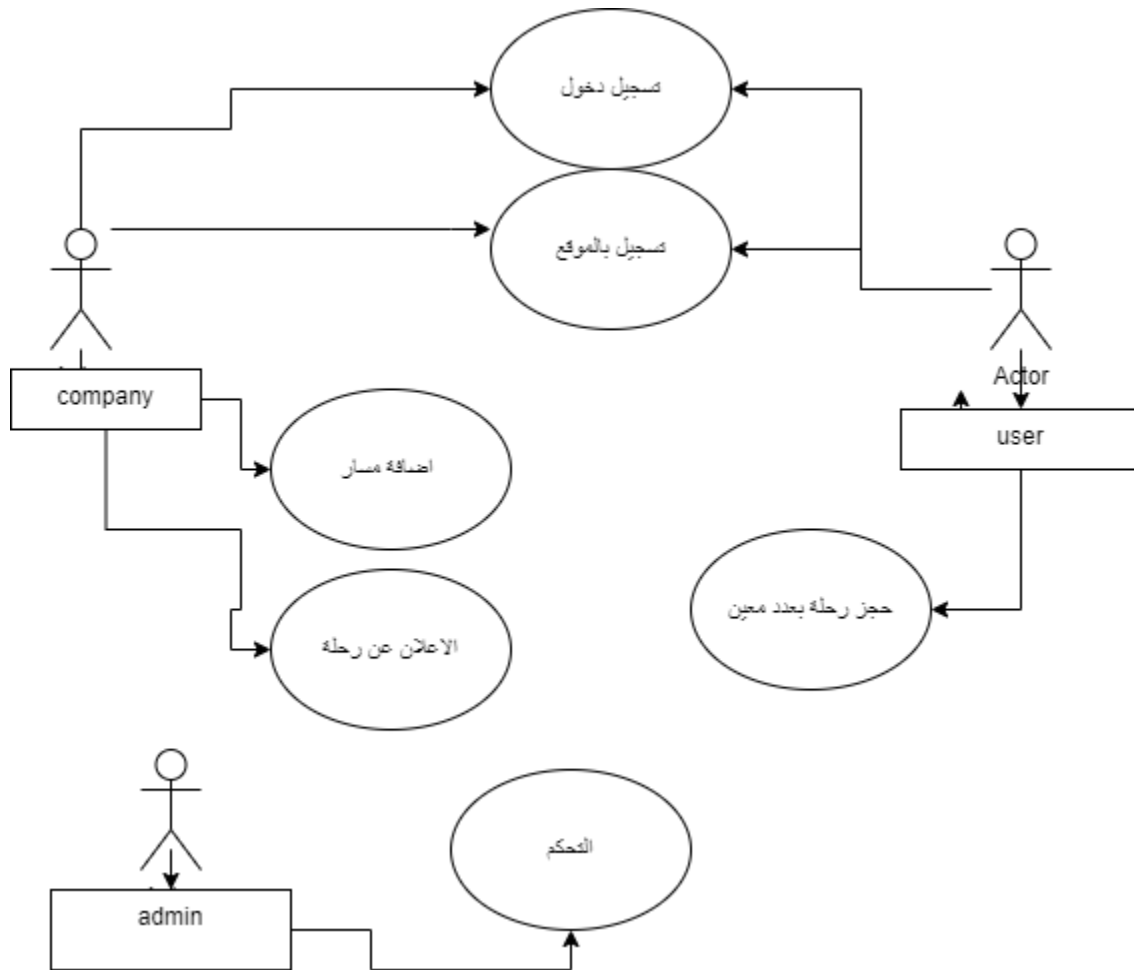
6-Simplicity: the application design will be simple for anyone to use and deal with

Chapter 3: Software Design

3.1 use case diagram

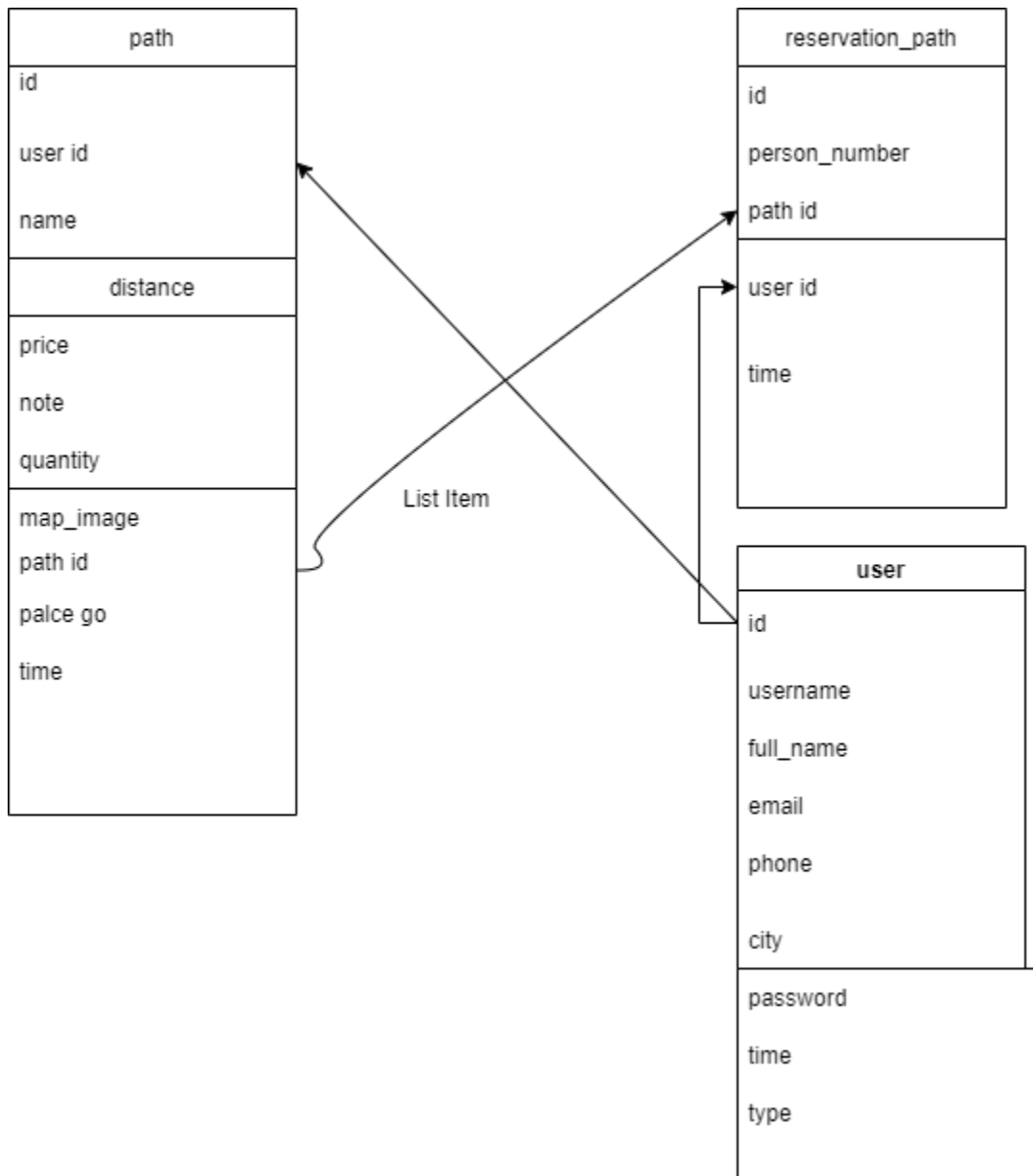
3.2 class diagram

3.1 use case diagram:



this figure is use case diagram

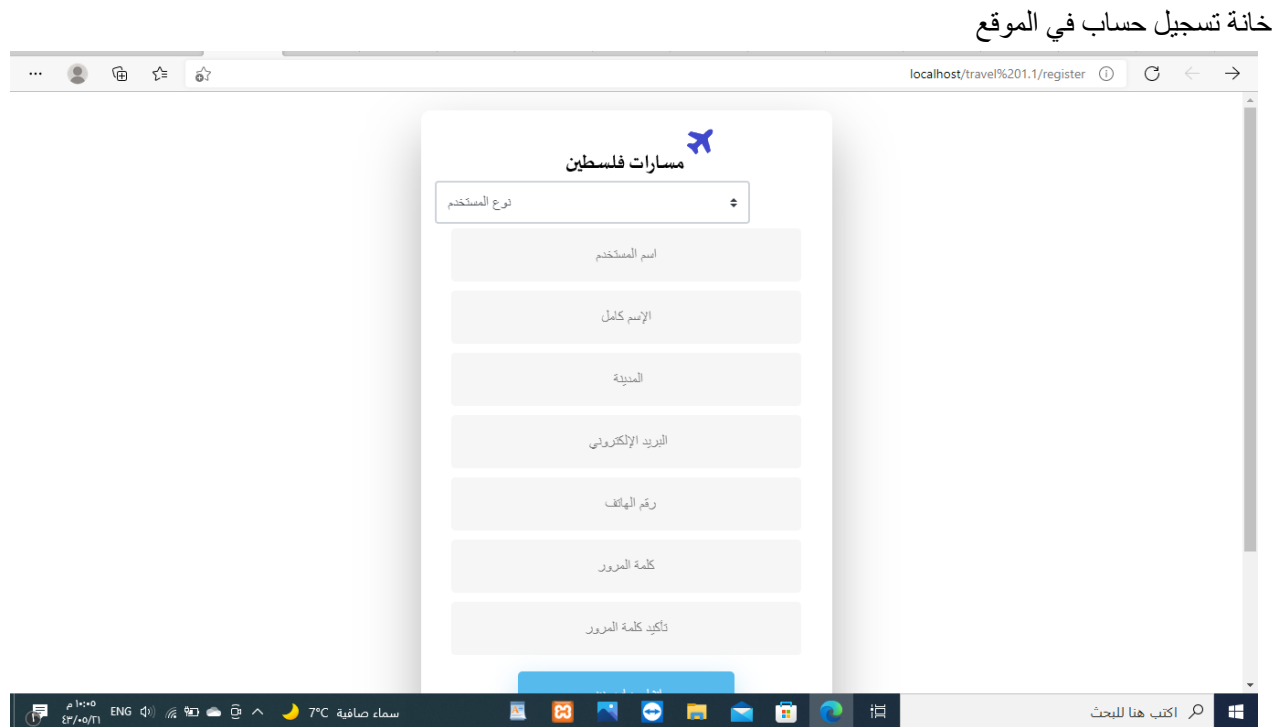
3.2 class diagram



this figure is class diagram

الواجهات (Views):

(ملاحظة) (بعض واجهات الموقع)



خانة تبين نوع الحساب في الموقع

masarp.com/register

مسارات فلسطين ✈

نوع المستخدم

نوع المستخدم
شركة
مستخدم عادي

الإسم كامل

المدينة

البريد الإلكتروني

رقم الهاتف

كلمة المرور

تأكيد كلمة المرور

خانة تبين تبيين الشاشة الرئيسية دون تسجيل دخول

masarp.com

تسجيل الدخول | رحل الداخل | عروض خاصة وميزه | التواصل | الصفحة الرئيسية

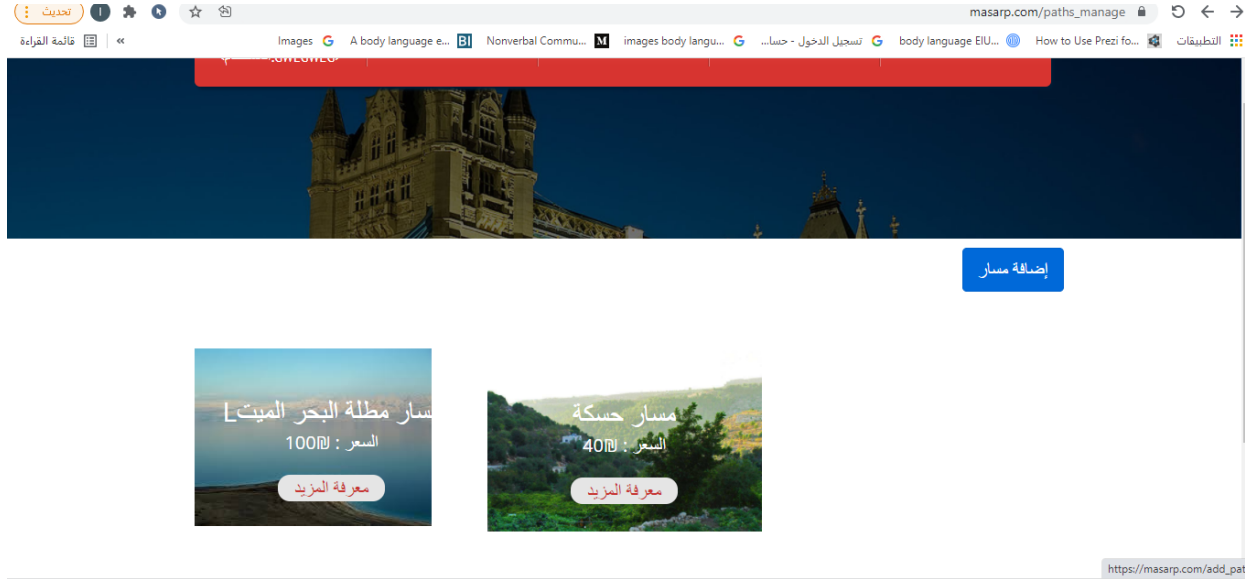
مسارات فلسطين ✈

مسار حسكة

السعر
40

معرفة المزيد

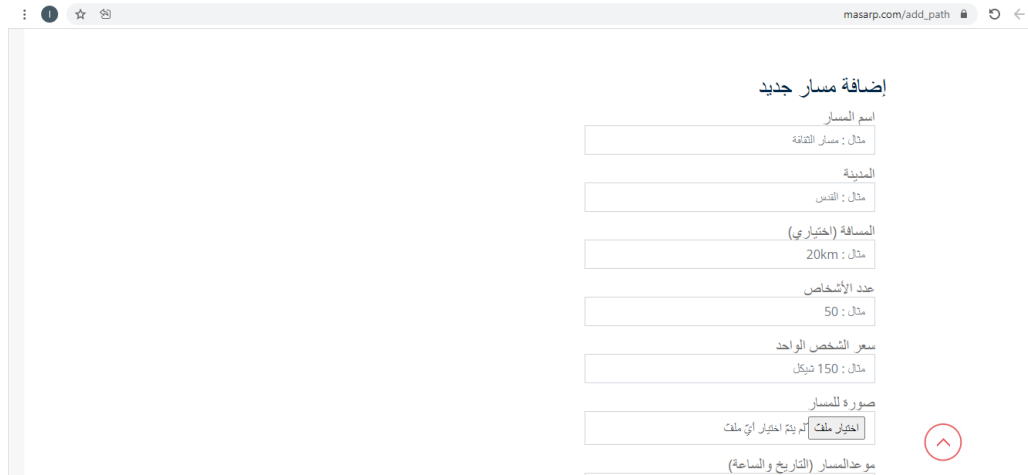
خانات تبين كيفية اضافة مسار لدى الشركات



The screenshot shows a web browser window with the URL masarp.com/paths_manage. The page features a dark blue header with a red bar at the top. Below the header, there is a blue button labeled "إضافة مسار" (Add Path). The main content area displays two path listings:

- مسار مطلة البحر الميت** (Dead Sea View Path) with a price of 100 ل. and a "معرفة المزيد" (Learn More) button.
- مسار حسكة** (Huska Path) with a price of 40 ل. and a "معرفة المزيد" (Learn More) button.

The URL in the bottom right corner is https://masarp.com/add_pat.



The screenshot shows a web browser window with the URL masarp.com/add_path. The page is titled "إضافة مسار جديد" (Add New Path). The form contains the following fields:

- اسم المسار (Path Name):
- مثال : مسار القنطرة (Example: Canal Path)
- المنطقة (Area):
- مثال : القدس (Example: Jerusalem)
- المسافة (اختياري) (Distance (Optional)):
- مثال : 20km (Example: 20km)
- عدد الأشخاص (Number of People):
- مثال : 50 (Example: 50)
- سعر الشخص الواحد (Price per person):
- مثال : 150 شيكل (Example: 150 Sheqel)
- صورة للمسار (Path Image):
- اختيار ملف (اختيار أي ملف) (Optional File (Choose any file))
- موعد المسار (التاريخ والساعة) (Path Date (Date and Time))

A red circular arrow icon is visible on the right side of the form.

مسار (اختياري)

مثال : 20km

عدد الأشخاص

مثال : 50

سعر الشخص الواحد

مثال : 150 نيكال

صورة للمسار

اختر ملف

موعد المسار (التاريخ و الساعة)

مثال : 2021/11/28 الساعة 8 صباحاً

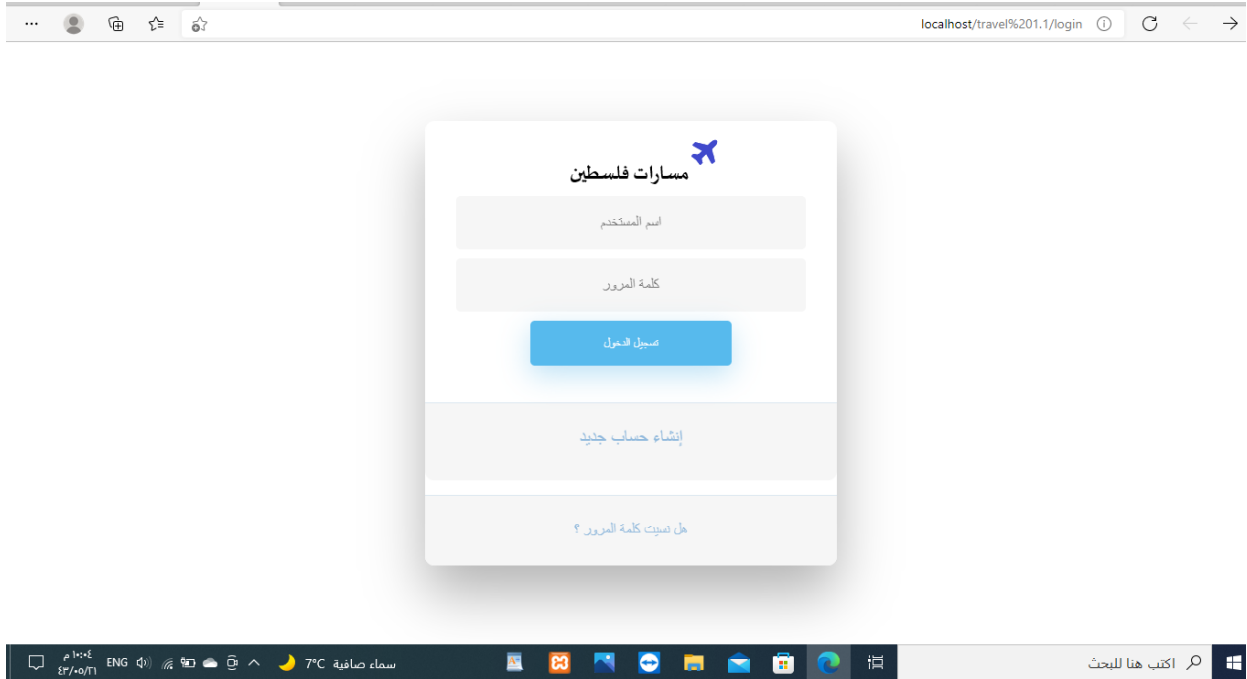
موقع الإنطلاق

مثال : القنس - باب المامود

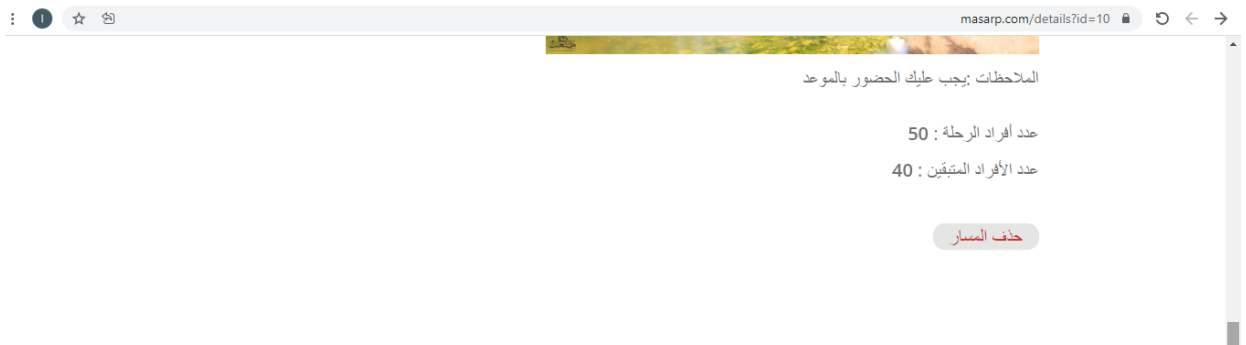
ملاحظات

مثال : يجب عليك الحضور بالمرعد المحدد

خانة تبيين تسجيل الدخول للشركات والمستخدمين



خانة حذف المسار لدى الشركة هذه الخانة توضح كيفية حذف المسار



خانات تبيين المشتركين لدى الشركة

الأشخاص الذين قاموا بالحجز

#	إسم الشخص	رقم الهاتف	العنينة	عدد المقاعد المحجوزة
21	laith1	1234567	hebron	5
22	MohammadS	1234567	Betlahim	5



OneDrive

تم حفظ لقطة الشاشة
تحت إضافة لقطة الشاشة إلى OneDrive.

mse.jpg baterv.jpg مشروع مسارات فل.pdf haska.jpg

سواء صافية 9°C

اكتب هنا للبحث

خانة تبين كيفية التسجيل بالمسار من خلال مستخدم

الملاحظات: يجب عليك الحضور بالموعد

عدد أفراد الرحلة: 50

عدد الأفراد المتبقين: 40

حجز المسار

خانة تبين المسارات المطروحة للتسجيل للمستخدم

مسار حسكة
السعر: 40
معرفة المزيد

مسار القدس
السعر: 50
معرفة المزيد

مسار عين فورده
السعر: 100
معرفة المزيد

مسار مطلة البحر الميت
السعر: 100
معرفة المزيد

chapter 4 System development and operation

4.1 introduction

4.2 Software needed for system development stage

4.3 System programming

4.4 running system

4.1 Introduction

In this chapter, we will learn about an important stage of building and operating the system, getting to know the software and tools needed to develop and operate the system, and the system's transition from the theoretical stage to the application stage. The steps of operating the system will be explained in detail in this chapter.

4.2 Software needed for system development stage

- windows 10 pro

is the business version of Windows that adds additional features on top of Windows 10 that would typically only be needed by offices requiring more data security and multi-user management features.

- google docs

an online form as easily as creating a document

- Server Xampp

is a free and open-source cross-platform web server solution stack package developed by Apache Friends,

- server web hosting

is a type of Internet hosting service that hosts websites for clients.

- Sublime Text

is a commercial source code editor. It natively supports many programming languages and markup languages.

- free bootstrap template

an open source template can anyone use it for free

4.3 system programming

The system consists of many sections, the system programming has been divided into two parts, the first section is programming the system algorithm and creating the system database. It includes programming the website pages, using bootstrap, and preparing 3 tables in the database for users, paths and reservations.

4.4 running system

Currently anyone can access the system through the Internet, but the system is still under development and addition

chapter 5 testing

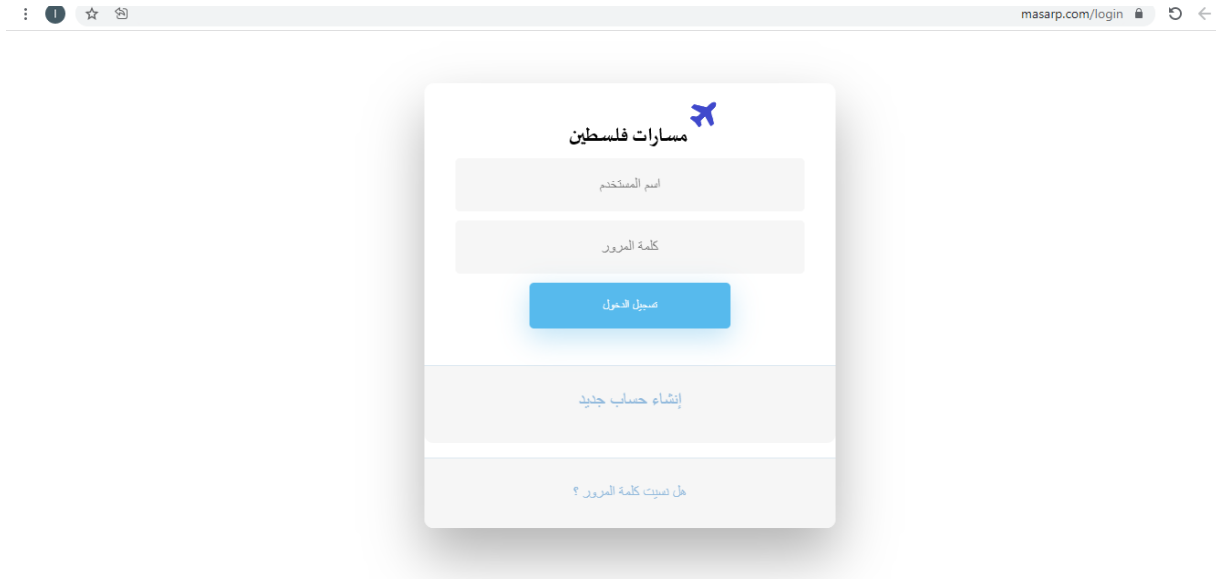
Introduction

At the stage of checking the system, we make sure that the system works correctly without a problem, and that the functional and non-functional requirements of the project are completed, and that the system works with accuracy and high speed in making reservations and checking the system services, and the stage of checking it comes after the design and implementation of the system. The method of checking the system will be explained in this chapter

Check system

1) Sign in

The user of the system enters the required information when he enters the system, and after pressing the login button, the system verifies the username and password with the system database, in order to verify the user's presence in the system. As in the two figures, where the first screen appears logging into the system after entering the password and username correctly



Checking the possibility of adding more than the allowed number in the path:

If the company added a flight and specified the number of 50 passengers

It cannot add more than 50 So that when adding, for example, 2 The number becomes 52 and he rejects it

The program indicates that the remaining number is zero and does not send a message that the registration has been completed successfully



الملاحظات: يجب الحضور

عدد أفراد الرحلة : 50

عدد الأفراد المتبقين : 0

حجز المسار



chapter 6 conclusion and future work

future work

We are looking into the future to build each path that has a clear map through Google Maps and We are looking forward to adding an electronic payment method (like visa or paypal) to guarantee the rights of our registered companies and adding an internal chat

system maintenance plan

In order for the system to function properly, and to avoid making mistakes that may lead to the destruction of large parts of it, it is necessary to develop a good plan to maintain the system from time to time or in the event of any problems on it.

conclusion :

I see a bright future for this project because of the lack of competitors, and it is a new and apparent idea, and the idea must be transferred from the ground to a technological application.

I collected information about companies specializing in tourist itineraries
And I saw that she has a great deal of this application

REF:

- 1) diagrams.net
- 2) W3Schools Online Web Tutorials
- 3) [Bootstrap · The most popular HTML, CSS, and JS library in the world. \(getbootstrap.com\)](http://Bootstrap · The most popular HTML, CSS, and JS library in the world. (getbootstrap.com))